

Release Note

Microsoft Windows NT Installation for NetBlaster cPCI Fast Ethernet Adapters



Installing Microsoft Windows NT 4.0 Driver

These instructions are relevant to the Microsoft Windows NT driver for the following ZNYX NetBlaster CompactPCI adapters:

Model	Bus	Number of Ports
ZX442	cPCI	2
ZX444	cPCI	4
ZX474	cPCI	4
ZX478	cPCI	8

The Microsoft Windows NT driver for the NetBlaster adapters can be obtained from the ZNYX web site at <http://www.znyx.com>. The distribution is a self-extracting archive containing all the files needed to complete the installation.

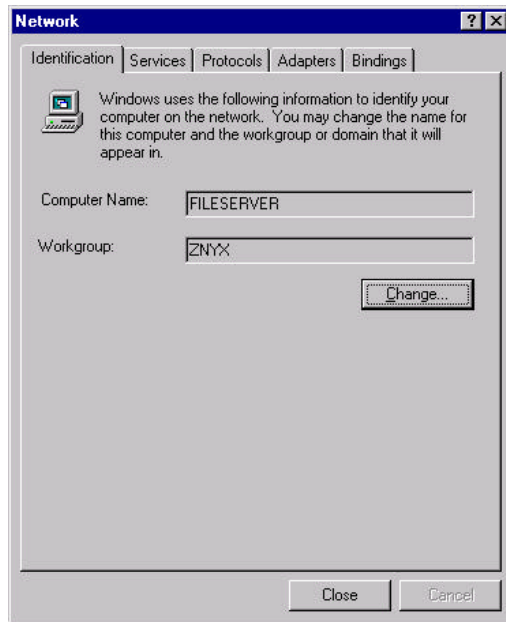
RETRIEVING DRIVERS

1. Visit the Microsoft Windows NT area of the ZNYX web site to obtain the appropriate Microsoft Windows NT driver for your NetBlaster adapter:
<http://www.znyx.com>
2. The driver is a self-extracting archive. Save the file and make note of its location.
3. Execute the file to extract the driver and information files. The files can be in any location on a floppy or a hard drive but must all be in the same folder. Remember the location as you will need to point the installation process at this folder.

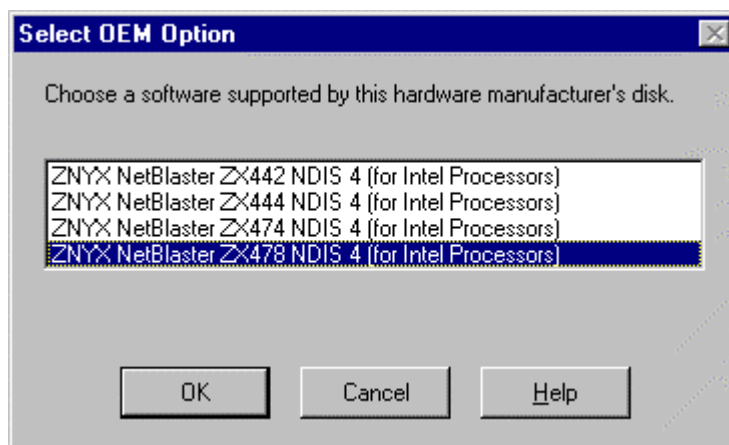
INSTALLING DRIVERS

The example below uses the ZX478 compactPCI eight-channel adapter. All multi-channel NetBlaster models follow the same installation steps.

1. From the Start button, choose Settings, and open the Control Panel. Open the Network controls.

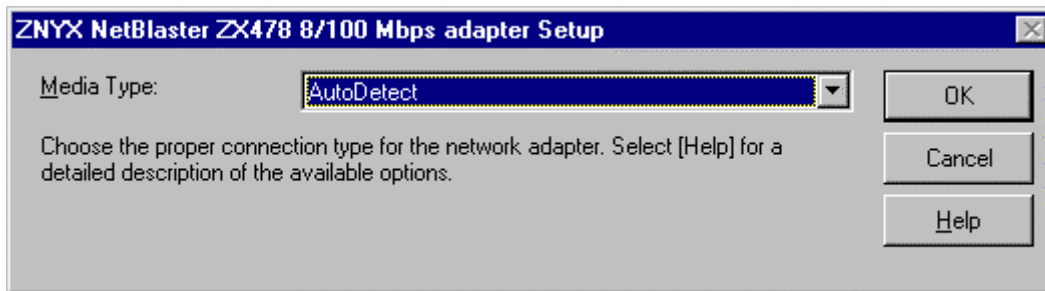


2. From the Network Settings dialog, add the new ZNYX adapter by choosing the Adapter tab, and then the Add button.
3. Click the Have Disk button and enter the full path to the location where the ZNYX driver and information files were extracted. For example, if you put the files on a diskette in the root directory, enter A:\. Click OK to begin the installation.
4. The Select OEM Option dialog box will list the NetBlaster CompactPCI adapter options . Select the model of ZNYX adapter that you are installing. Be sure to select the correct adapter model . Click OK to begin the installation.



5. For multi-channel adapters, one instance of the driver will be installed for each port on the adapter. Configuration of the PCI Bus Number and PCI Device number is automatic. The default media type is set to AutoDetect, but can be changed by selecting an instance of the driver, and choosing the Properties button.

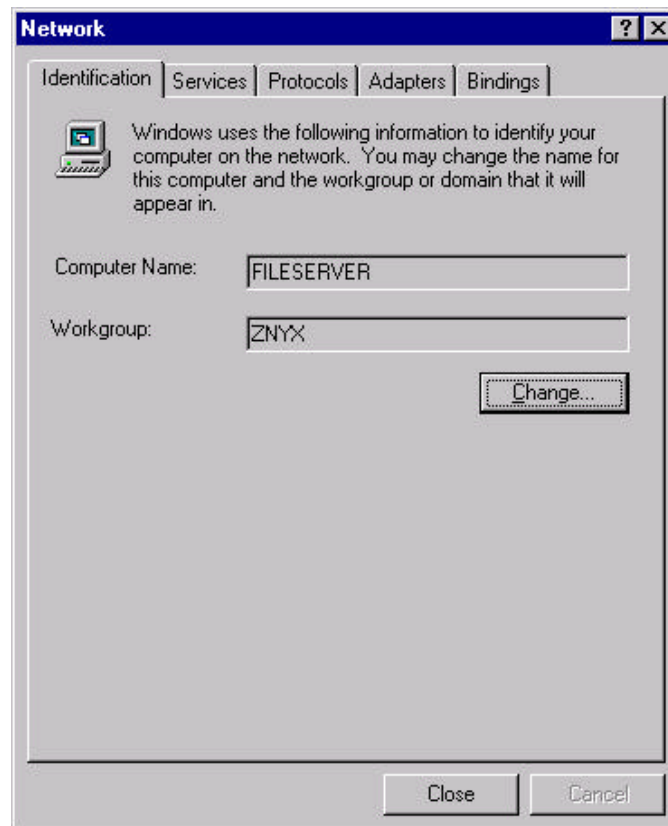
6. The Media Type will automatically be detected. When the adapter setup screen is displayed, click OK to accept the default options.



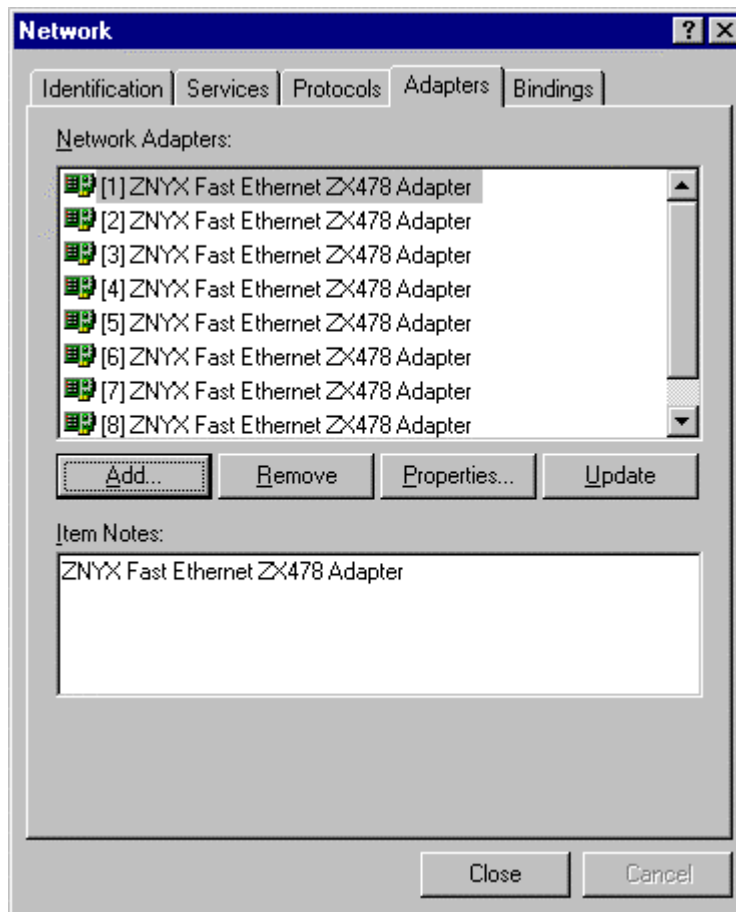
7. Complete all Protocol configuration as required, and follow the prompts to exit from the Network settings. Follow the instructions to reboot the system, and begin using your adapter.

Uninstalling Microsoft Windows NT 4.0 Driver

1. From the Start button, choose Settings, and open the Control Panel. Open the Network controls.



- From the Network Settings dialog, delete the ZNYX adapter by choosing the Adapters tab. Highlight the ZNYX adapter that you would like to remove and click Remove.



- Follow the prompts to close the windows and reboot the system. The instance of the driver for that adapter is now removed.

Release Notes

- When installing multiple types of ZNYX compactPCI adapters, you must install one type of adapter completely, including loading the driver and rebooting the system before physically adding another type of adapter into the system. Follow the above instructions for each type of ZNYX adapter you want to install.
- When selecting the adapter type in the Select OEM option dialog box (step 5), if an incorrect adapter is chosen the driver will install but not load. The adapter will not function.



ZNYX Corporation
48501 Warm Springs Blvd., Suite 107
Fremont, CA 94539 USA
(510) 249-0800
Fax (510) 656-2460
www.znyx.com

Document # DC0113-01

© 1999 ZNYX Corporation. All rights reserved worldwide. All information in this document is subject to change without prior notice. ZNYX and NetBlaster are trademarks or registered trademarks of ZNYX Corporation in the United States and/or other countries. All other marks, trademarks or service marks are the property of their respective owners.

