

Release Note



Microsoft Windows NT Installation for NetBlaster PCI and CompactPCI Fast Ethernet Adapters

Installing Microsoft Windows NT 4.0 Driver

These instructions are relevant to the Microsoft Windows NT driver for ZNYX NetBlaster PCI and CompactPCI adapters, models ZX345, ZX345Q, ZX346, ZX346Q, ZX348, ZX348Q, ZX412 and ZX414. The Microsoft Windows NT driver for the NetBlaster adapters can be obtained from either the ZNYX web site at <http://www.znyx.com> or ftp site at <ftp.znyx.com>. The distribution is a self-extracting archive containing all the files needed to complete installation.

You should run the DIAGxxx.EXE program under DOS (where xxx is the model number of your adapter (i.e 345, 346, 348, 412, or 414) before you install the network drivers for Windows NT. If you are upgrading from another adapter, please make sure to remove all existing network drivers (described in the second part of this chapter) before installing the ZNYX drivers.

IDENTIFYING HARDWARE

1. You should have your adapter installed in your system before installing the driver.
2. For the ZX345Q single channel adapter, you will need to know the PCI bus number that the NetBlaster adapter is associated with in PCI configuration space. The default value for single-port adapters is 0. The multi-channel adapters will automatically determine all necessary PCI configuration information. If possible, run the DOS-based diagnostics in the system and verify the bus number (Bus) and device number (Dev) for the board. The diagnostics ship with your board and are also available from the ZNYX web site or ftp site. First, boot DOS, and then type:

```
diagxxx list    (substitute your model  
                 number for xxx)
```

You should see a list like the following (this is an example for the ZX414)

```
DIAG414 Version 1.38 for ZNYX NetBlaster ZX414 4/100 Mbps adapter  
(c) Copyright 1998 ZNYX Corporation - All Rights Reserved.  
PCI BIOS Information: Version=2.10, Config Mechanism=1, Last Bus=2
```

Bus	Dev	Fn	Vendor	Device	Rev	Type	Lat	IL	IRQ	Note
=====	=====	=====	=====	=====	=====	=====	=====	=====	=====	=====
0	0	0	8086	1250	03	Host Bridge	20	-	-	
0	7	0	8086	7000	01	PCI-ISA	00	-	-	
0	7	1	8086	7010	00	IDE	20	-	-	
1	4	0	1011	0019	30	Ethernet	40	A	9	ZX414
1	5	0	1011	0019	30	Ethernet	40	A	3	ZX414
1	6	0	1011	0019	30	Ethernet	40	A	10	ZX414
1	7	0	1011	0019	30	Ethernet	40	A	5	ZX414

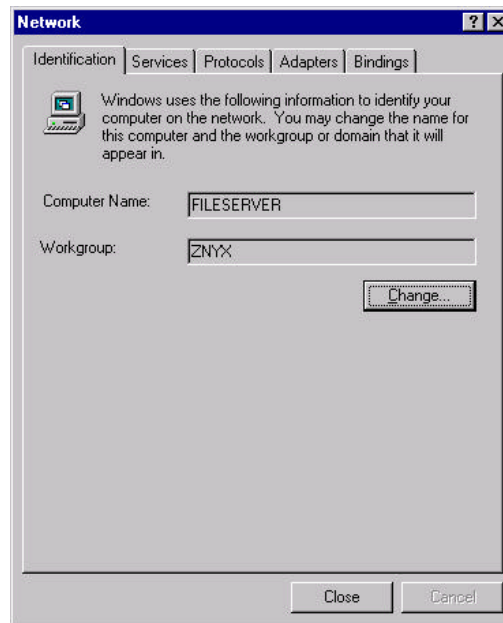
RETRIEVING DRIVERS

1. Visit the Driver Download area of the ZNYX web site to obtain the appropriate Microsoft Windows NT driver for your NetBlaster adapter:
<http://www.znyx.com/drivers/drivers.htm>
2. The driver is a self-extracting archive. Save the file and make note of its location.
3. Execute the file to extract the driver and information files. The files can be in any location on a floppy or a hard drive, but must all be in the same location. Remember the location as you will need to point the installation process at this folder.

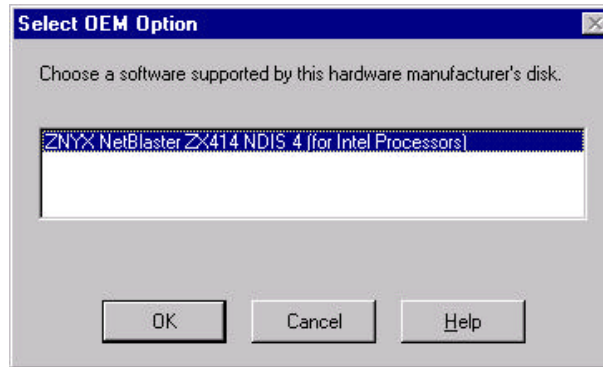
INSTALLING DRIVERS

The example below uses the ZX414 CompactPCI four-channel adapter. All multi-channel NetBlaster models follow the same installation steps. The single-channel adapter is similar, but includes additional steps to pick the PCI Bus settings.

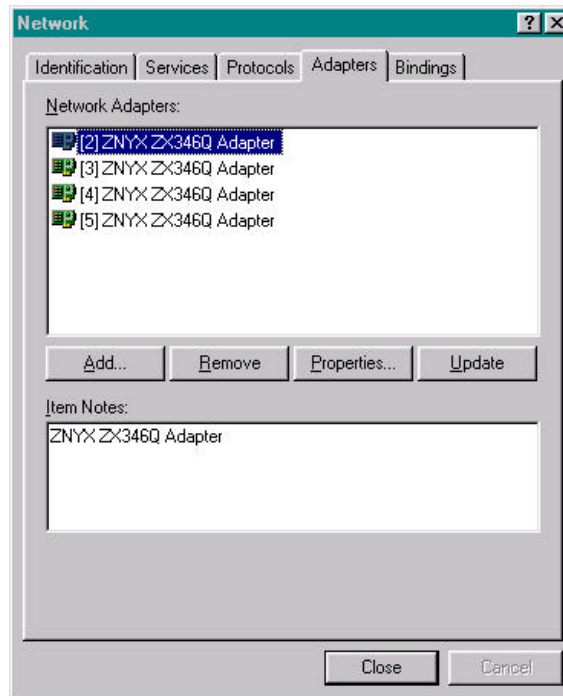
1. From the Start button, choose Settings, and open the Control Panel. Open the Network controls.



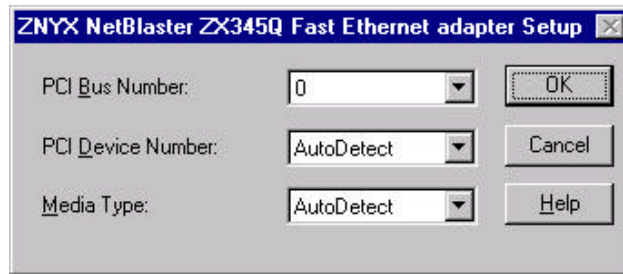
2. From the Network Settings dialog, add the new ZNYX adapter by choosing the Adapter tab, and then the Add button.
3. Click the Have Disk button and enter the full path to the location where the ZNYX driver and information files were extracted. For example, if you put the files on a diskette in the root directory, enter A:\. Click OK to begin the installation.
4. The Select OEM Option dialog box will list the NetBlaster CompactPCI adapter that you are installing (this example uses the ZX414). Click OK to begin the installation.



5. For multi-channel adapters, one instance of the driver will be installed for each port found in the system. Configuration of the PCI Bus Number and PCI Device number is automatic. The default media type is set to AutoDetect, but can be changed by selecting an instance of the driver, and choosing the Properties... button.



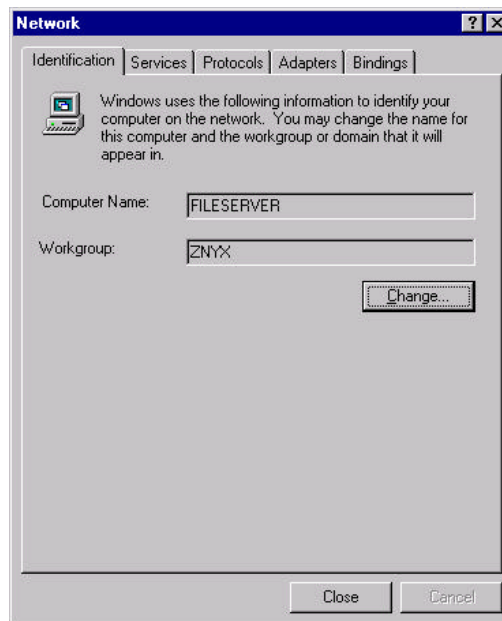
6. For single-channel adapters, you need to select the PCI Bus Number. The default PCI Device Number (AutoDetect) auto detects the board on the selected bus, and should work for most cases, as should the media type (AutoDetect). You can use the DOS-based diagnostics to determine the PCI Bus Number and PCI Device Number for the adapter.



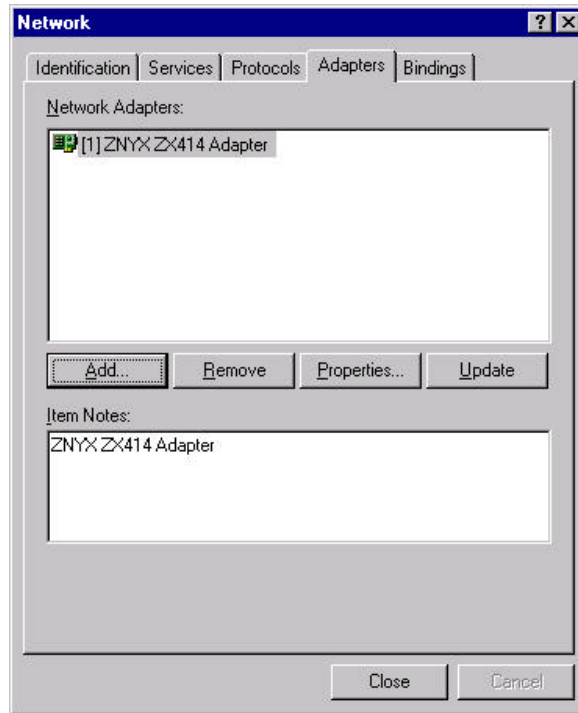
7. As you exit the adapter setup screen, the driver will automatically install and you will be returned to the Network screen. Repeat this process for each port of the adapter, and for each adapter that you are installing.
8. Complete all Protocol configuration as required, and follow the prompts to exit from the Network settings. Follow the instructions to reboot the system, and begin using your adapter.

Uninstalling Microsoft Windows NT 4.0 Driver

1. From the Start button, choose Settings, and open the Control Panel. Open the Network controls.



2. From the Network Settings dialog, delete the ZNYX adapter by choosing the Adapters tab. Highlight the ZNYX adapter that you would like to remove and click Remove.



3. Follow the prompts to close the windows and reboot the system. The instance of the driver for that adapter is now removed.

Release Notes

- The default text for the PCI Device Number choice has been changed from “0” to AutoDetect. The function is the same. The name was changed for clarity.
- If you do not have the ability to boot DOS, there is a Windows NT application available at no charge from Blue Water Systems, which can help you determine the PCI Bus and Slot numbers for devices in the system. The application is called “PCI View” and can be found at:

http://www.bluewatersystems.com/frames/content11_1.html



ZNYX Corporation
48501 Warm Springs Blvd., Suite 107
Fremont, CA 94539 USA
(510) 249-0800
Fax (510) 656-2460
www.znyx.com

Document # DU0120-02

© 1998 ZNYX Corporation. All rights reserved worldwide. All information in this document is subject to change without prior notice. ZNYX and NetBlaster are trademarks or registered trademarks of ZNYX Corporation in the United States and/or other countries. All other marks, trademarks or service marks are the property of their respective owners.