

INETCFG

Purpose

Use at the server console to set up and customize your internetworking configuration for IPX™, IP, and AppleTalk*.

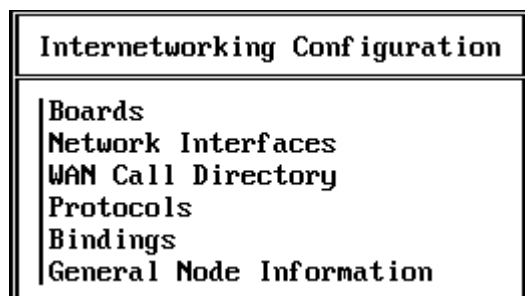
INETCFG simplifies the process of configuring local area networks (LANs) to work with network and routing protocols supported by NetWare®.

Syntax

```
[LOAD] INETCFG
```

Using INETCFG

When you load INETCFG, the Internetworking Configuration menu appears, as shown in the following figure. You access INETCFG features from this menu.



Menu options are:

Option	Use to
Boards	<p>Select and configure boards. To configure a board, you select a driver, assign a name to the board, and specify values for the board parameters.</p> <p>Each driver that is compatible with NetWare has a driver description file, sometimes called the LDI file. The LDI file defines the parameters necessary for the driver to operate with the board you select. It also specifies the valid range of values for each parameter.</p> <p>If a driver has an LDI file, the parameters are presented in the Board Configuration window; you simply select a value for each parameter.</p> <p>If a driver has no LDI file, you must enter the values yourself in the Board Parameters field.</p>
Network Interfaces	Applies only to wide area network (WAN) configurations for multiple interface WAN boards. (NetWare does not support WANs.)
WAN Call Directory	Applies only to WAN configurations. (NetWare does not support WANs.)
Protocols	Select and configure network protocols. To configure a protocol, you select the protocol, such as IPX or IP, and configure the protocol-specific parameters that pertain to routing, packet forwarding, etc.
Bindings	<ul style="list-style-type: none"> • Bind a network protocol to an interface. • Configure protocol and interface-specific parameters, such as frame type, network number (for IPX), local IP address (for IP), and zone information (for AppleTalk). • Delete a bound interface from the configuration.
Manage Configuration	Specify Simple Network Management Protocol (SNMP) information, such as the SNMP device name, hardware description, physical location, and human contact for the server or router.
View Configuration	<ul style="list-style-type: none"> • View the INETCFG configuration information file and the console messages captured during system initialization • Import or export configuration information to or from a diskette.

INETCFG records information in various configuration (.CFG) files located in sys:\etc. Some of these files are present at system startup; others are created by INETCFG, depending on what you configure. Here is a partial list of these files:

- AURP.CFG
- TCPIP.CGF
- IPXSPX.CFG
- NLSP.CFG

- NETINFO.CFG

WARNING: *INETCFG* creates these files strictly for its own use; do not delete them or change their contents.

Additional Information

Topic	See
Capturing console messages	"CONLOG"